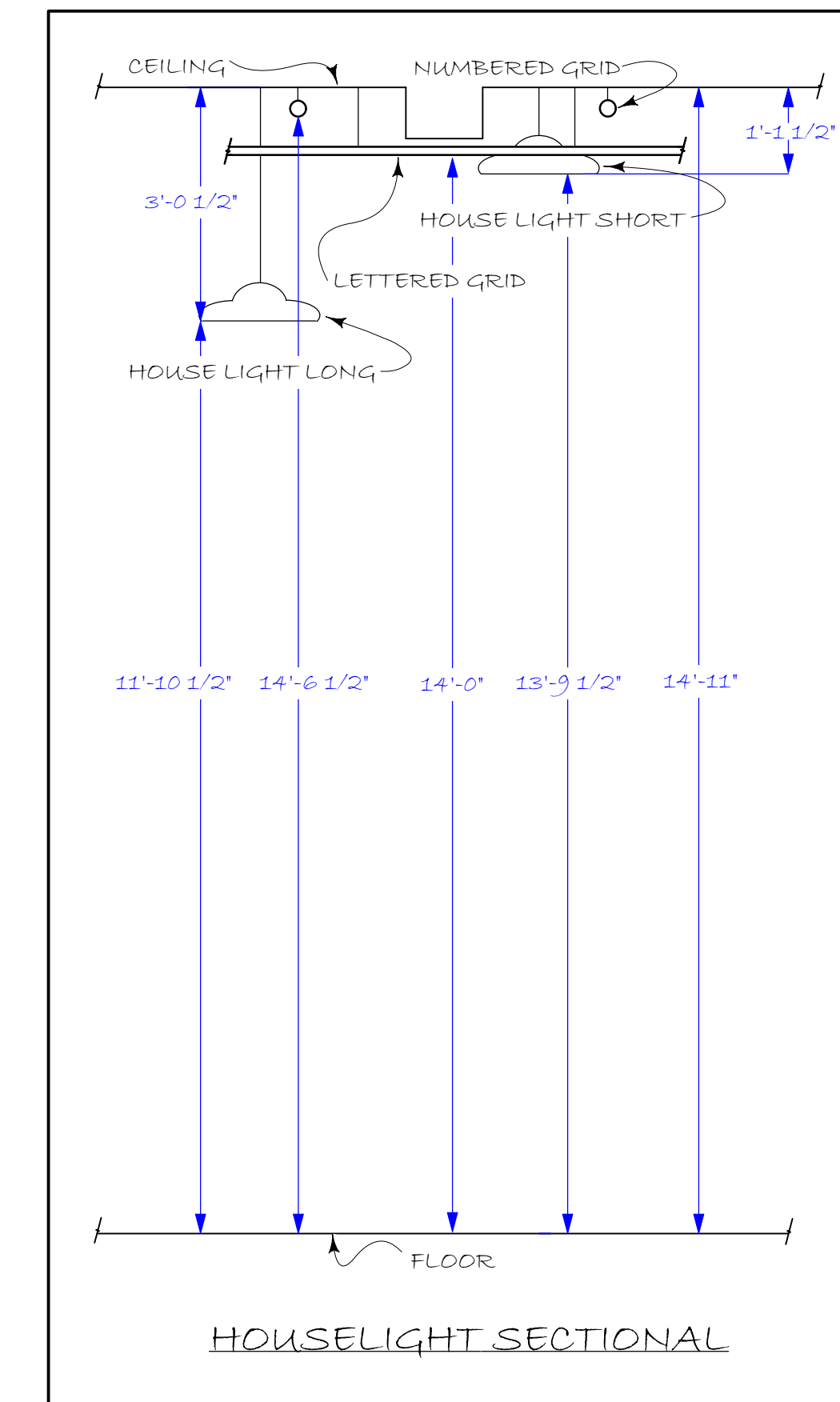
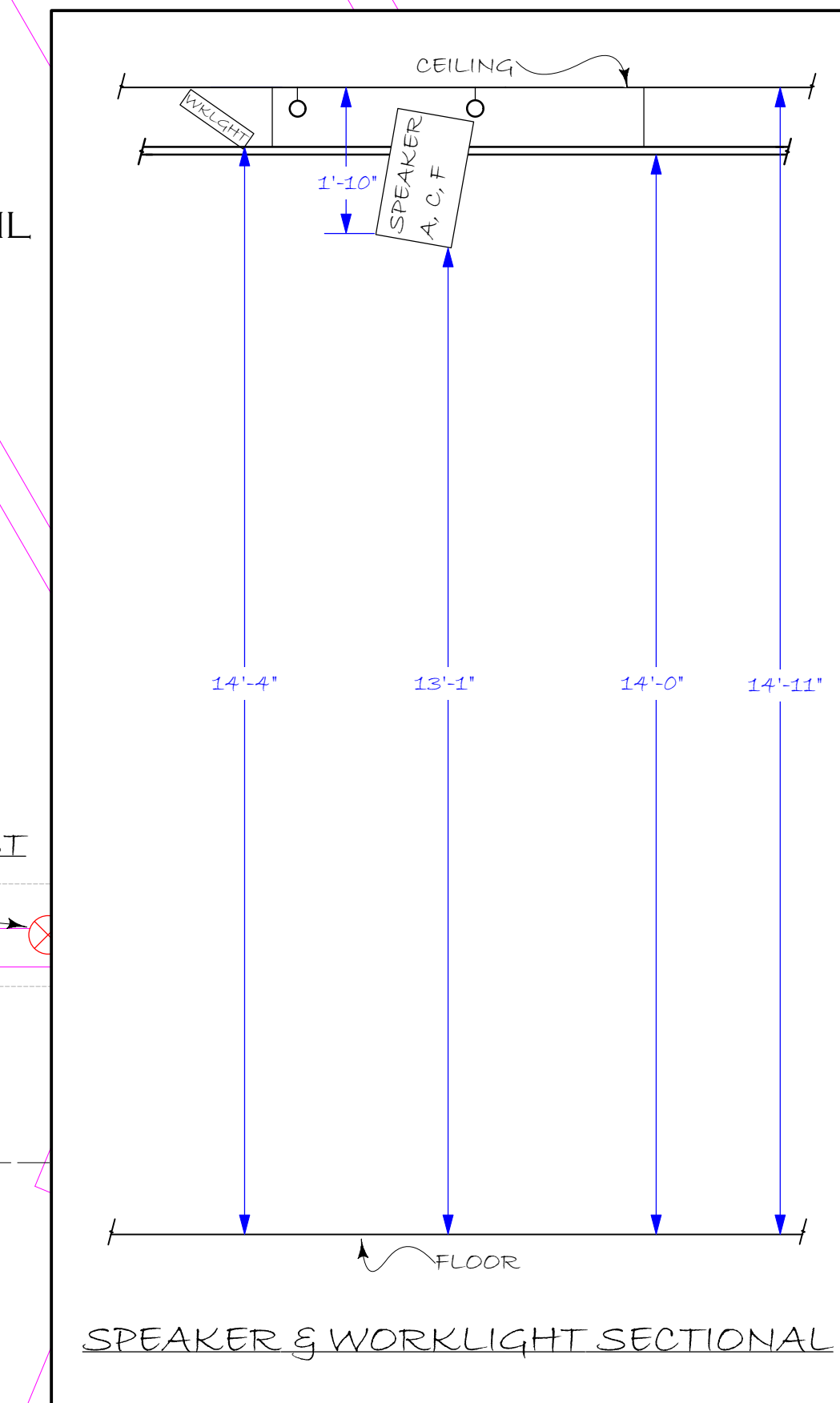
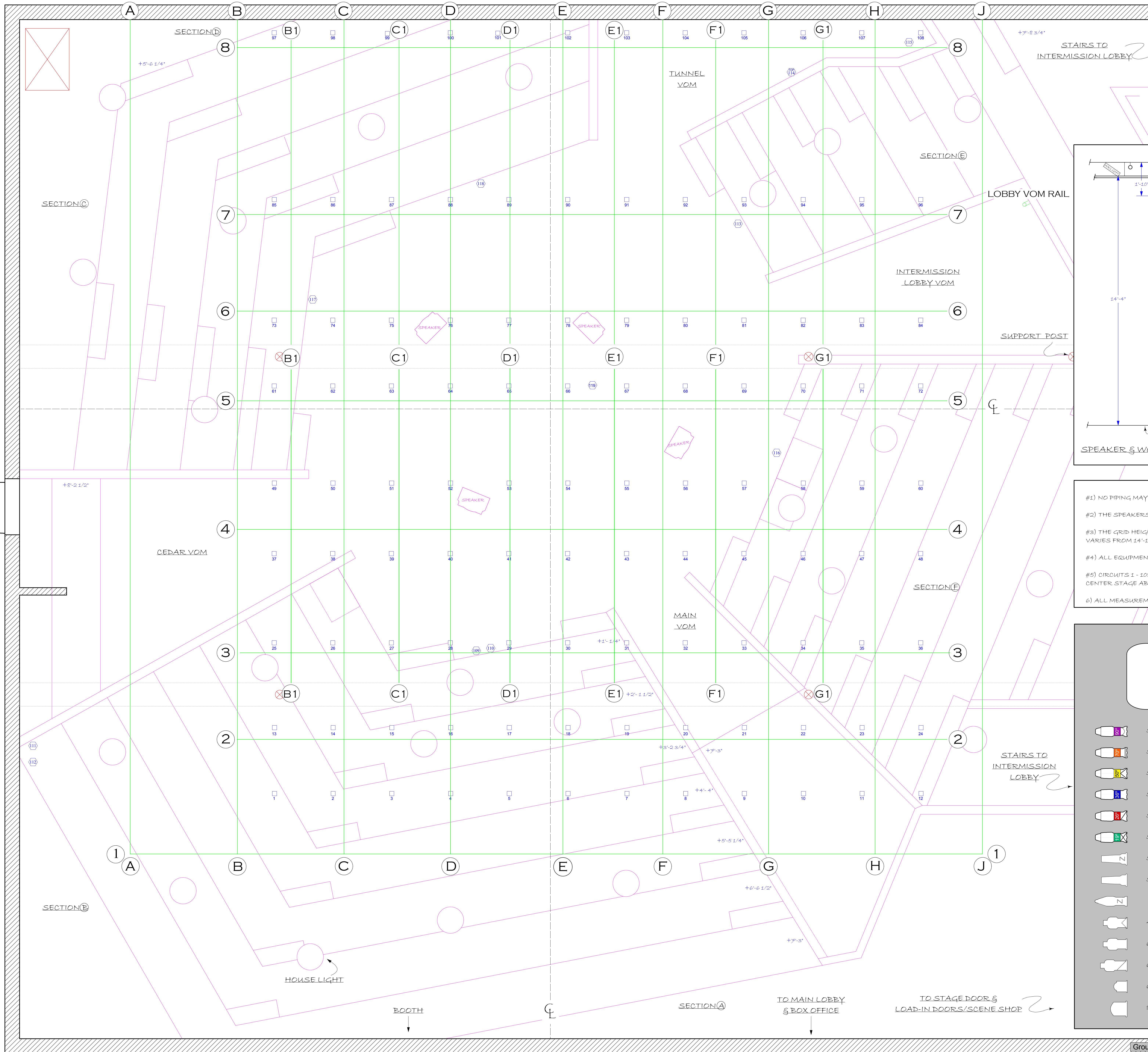




245 CEDAR AVENUE, MINNEAPOLIS, MN 55454
ADMINISTRATION PHONE: 612-333-2919



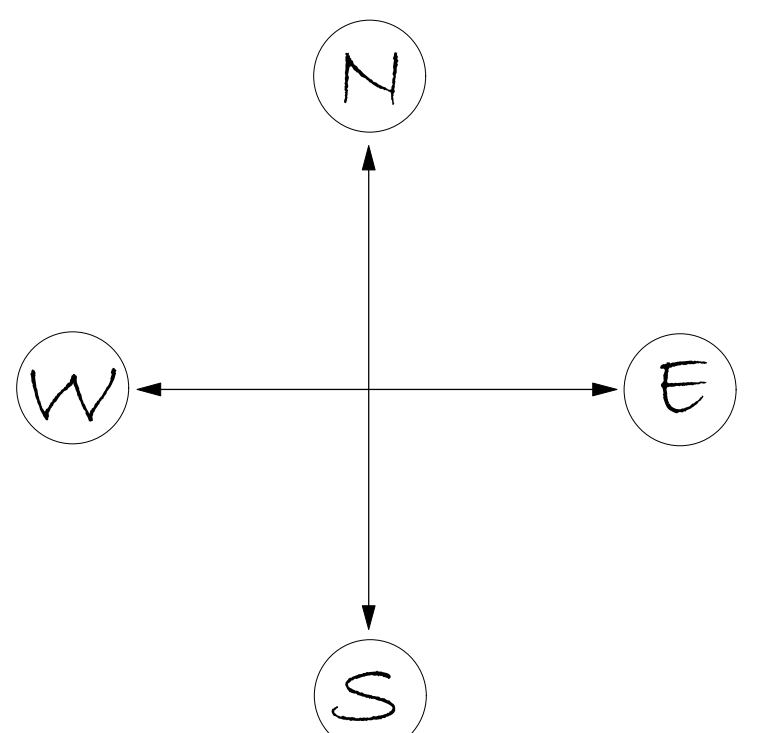
- NOTES**
- #1) NO PIPING MAY BE ADDED TO THE GRID & NO ROOMS MAY BE ADDED IN THE VOMS. (EXCEPT IN THE TUNNEL VOM).
 - #2) THE SPEAKERS, HOUSE LIGHTS, & WORKLIGHTS ARE PERMANENT & CANNOT BE MOVED.
 - #3) THE GRID HEIGHTS IN GENERAL VARY FROM +/- 2" OVER WHAT IS SHOWN (I.E. LETTERED GRID SHOWN AT 14'-0" VARIES FROM 14'-1" TO 13'-11").
 - #4) ALL EQUIPMENT HUNG ON THE GRID MUST BE SAFETY CHAINED.
 - #5) CIRCUITS 1 - 108 ARE ABOVE THE GRID. CIRCUITS 109-118 ARE ONSTAGE. CIRCUIT 119 RUNS THROUGH THE CEILING CENTER STAGE ABOVE THE GRID. CIRCUIT 120 CONTROLS THE HOUSE LIGHTS. DIMMER PER CIRCUIT (CIR 1 = DIM 1).
 - #6) ALL MEASUREMENTS ARE ACCURATE WITHIN +/- 2".

KEY

	— TEMPLATE		CIRCUIT (ONSTAGE)
	— UNIT #		CIRCUIT (RACEWAY)
	— CHANNEL		
	— CIRCUIT		

	SOURCE 4 - 300, 575W HPL		SOURCE 4 PAR VNSP, 575W HPL
	SOURCE 4 - 700, 575W HPL		SOURCE 4 PAR NSP, 575W HPL
	SOURCE 4 - 500, 575W HPL		SOURCE 4 PAR MFL, 575W HPL
	SOURCE 4 - 360, 575W HPL		SOURCE 4 PAR WFL, 575W HPL
	SOURCE 4 - 260, 575W HPL		PAR 46, 200W
	SOURCE 4 - 190, 575W HPL		PAR 56, 500W
	SOURCE 4 Jr. ZOOM 25-500, 575W HPL		PAR 64, 1KW
	SOURCE 4 Jr. -500, 575W HPL		TOP HAT (SNOOT)
	SL ZOOM 23-500, 575 G/LA		HALF TOP HAT (HALF SNOOT)
	4.5 x 6 ELIPSOIDAL, 575W		4 PANEL, 6' BARN DOOR
	6 x 9 ELIPSOIDAL, 575W		GOBO ROTATOR (DMX CONTROL)
	6 x 12 ELIPSOIDAL, 575W		HANGING PRACTICAL
	6' FRESNEL, 500W BTL		HAZER (DMX CONTROL)
	8' FRESNEL, 1KW B/VV		HOUSE LIGHT, 100W

Ground Plan Revised: 09/25/10 PWM



GROUND PLAN

THEATRE IN THE ROUND		
DIRECTION:	SCENIC DESIGN:	PLATE 1 of 1
LIGHTING DESIGN:	DRWN:	DATE:
		SCALE: 1/2" = 1'-0"